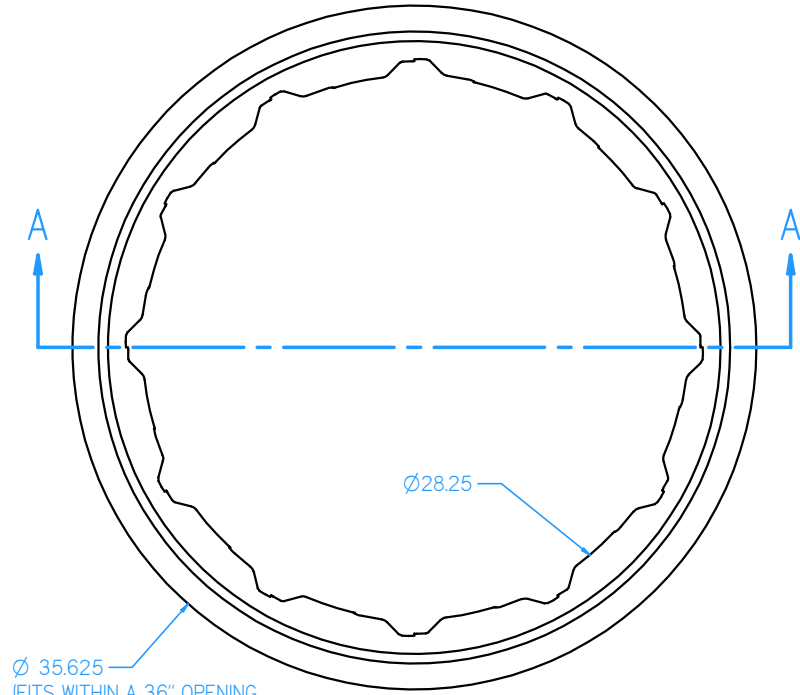
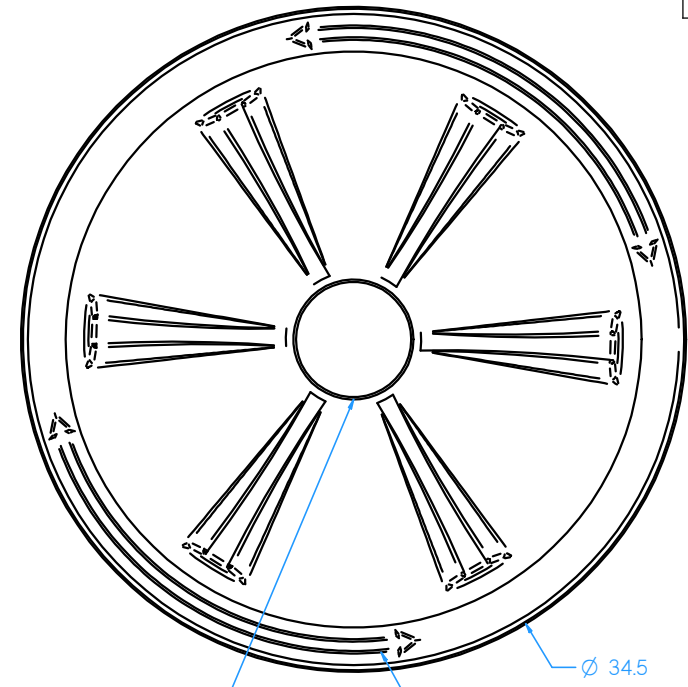




MATL: FIBERGLASS  
 FINISH: WHITE  
 VOLUME: 0 in³  
 UNLESS SPECIFIED  
 1 PL ± 0.125"  
 2 PL ± 0.063"  
 3 PL ± 0.031"  
 ANGULAR ± 1.0°

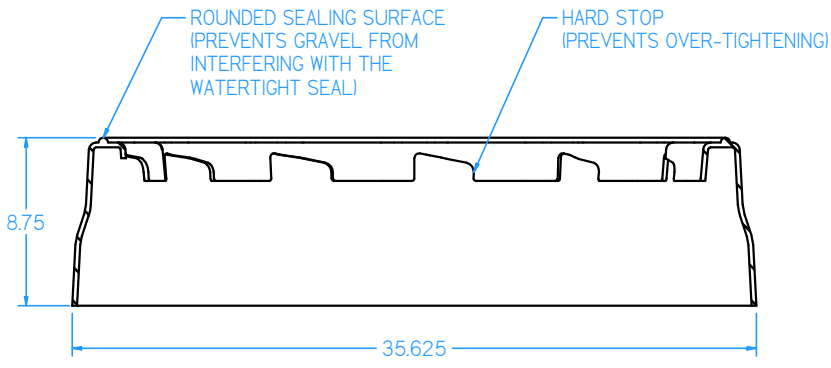


Ø 35.625  
 (FITS WITHIN A 36" OPENING  
 TO EASILY UPGRADE EXISTING  
 TANK SUMPS WITHOUT  
 BREAKING CONCRETE)

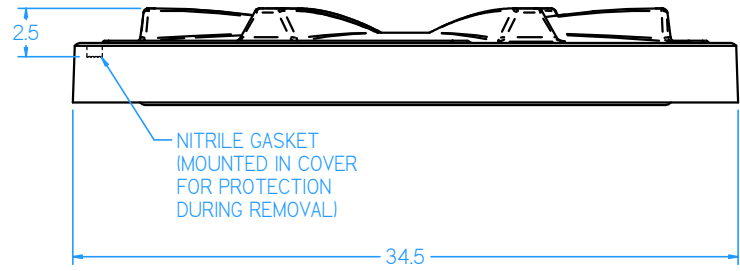


OPTIONAL REMOVABLE  
 INSPECTION PORT  
 (FOR EASY INSPECTION)

OPEN / CLOSE  
 IDENTIFIERS



SECTION A-A



THIS IS A CONFIDENTIAL DOCUMENT TO SUPPLY YOU WITH THE NECESSARY INFORMATION NEEDED FOR THE PLANNING OF RETAIL SITES. IT IS NOT THE PURPOSE TO SUPPLY THIS DOCUMENT TO ANY PARTY THAT MAY USE THIS DOCUMENT FOR ANY PURPOSES OF MANUFACTURING OR ANY OTHER USE WITHOUT THE SOLE WRITTEN CONSENT OF PETROLEUM CONTAINMENT INC. ANY COMPANY FOUND TO VIOLATE THIS MAY FIND THEMSELVES IN SUIT FOR DAMAGES TO PETROLEUM CONTAINMENT INC.

SHEET <b>1</b> OF 1	TITLE <b>12PT TWIST-LOK CONVERSION KIT</b>	DRAWN Joey Arr	DATE 10/03/08	APPROVED SJA	PETROLEUM CONTAINMENT, INC. 3511 WALNUT ST. JAX., FL 32206 (904) 358-1700 - (904) 358-1702 FAX WWW.PETROLEUM-CONTAINMENT.COM
	SCALE NTS	DWG NO 12PLS-1	REV N/C	FILE: FILE: 12PLS-1.dft	